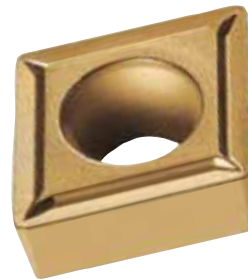
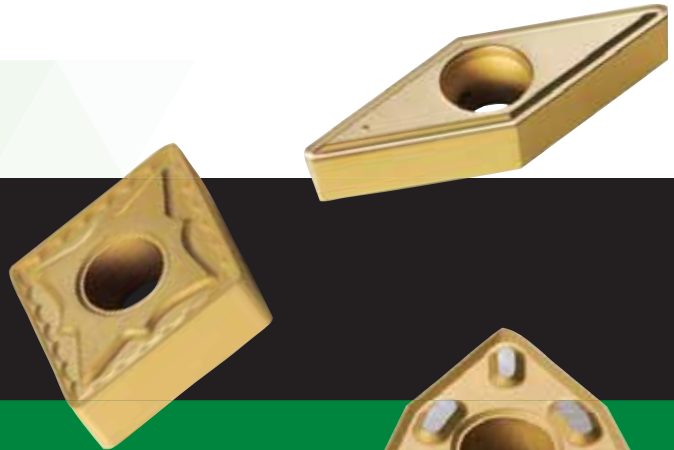


The Gold Standard for Value •  
WIDIA™ VariTurn™

# VariTurn

WIDIA VariTurn is the cost-effective line of inserts from the brand you already know and trust for quality. Each insert is 100% manufactured by WIDIA to outperform the competition. WIDIA VariTurn offers the versatility for those operators that are cutting steel today and cast iron tomorrow and need an insert to get the job done. A focused portfolio with a simple grade selection method allows WIDIA VariTurn to be used for up to approximately 80% of all turning applications.

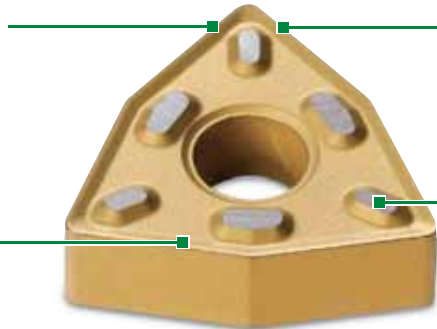
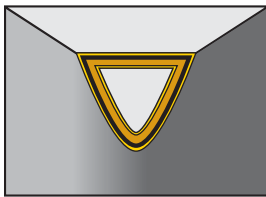
- Engineered to optimise performance.
- Gold coating on every insert.
- Proven grade technologies.



**Post-coat treatment**

- Improves edge toughness.
- Wide range of applications.

MT-CVD/CVD-  
TiN-TiCN-Al2O3-TiN



**Improved edge toughness**

- Provides smooth outer surface to reduce forces, friction, and workpiece sticking.

**Post-coat grinding**

- Provides secure seating surface.

## Getting the Most from Every Insert

WIDIA™ VariTurn™ products make it simple to get the most out of your inserts, and your money. Every insert is gold, which exposes wear as the tool continues to be used. This makes it easy to detect when an insert is ready to be changed — maximising the product's value and protecting the workpiece. Also, because WIDIA VariTurn inserts can be used in most applications, a single insert can take on any number of tasks, thus reducing your inventory. WIDIA VariTurn products are also reliable enough to cut steel, stainless steel, cast iron, and high-temperature alloys, enabling quick changes in workpiece materials without the need to swap inserts, saving time and money.

## WIDIA VariTurn Options

This versatile line offers a simple geometry selection system, eight grades, and eight geometries, including negative rake and screw-on. With these options, WIDIA VariTurn inserts cover 80% of all general turning applications.